



BEECH ROAD, WROXHAM
£810,000 FREEHOLD

WATERSIDE
ESTATE AGENTS



BEECH ROAD, WROXHAM NR12 8TP

- An impressive waterside residence, built in 2004
- Detached wet boathouse with spacious and versatile accommodation
- Master bedroom suite with 5 piece en-suite bathroom and galleried study
- 32ft mooring, detached garage and ample private parking
- Idyllic setting just off the River Bure

Built by the owners in 2004, this beautifully presented waterside residence is set just off the River Bure and offers well proportioned and flexible accommodation, a private mooring and a detached wet boathouse with generous ancillary accommodation suitable for a variety of uses.

Of timber construction under a thatched roof set on steel piles, this extended and improved riverside home has been designed to combine the best modern materials and standards of finish with the style and character of a traditional Broads residence, complemented by the idyllic location.

The accommodation comprises a spacious reception hall which also doubles as a dining room. Double doors lead to an impressive dual aspect living room with high

vaulted ceilings and a view of the water; this in turn leads to the sun room, bathed in natural light looking over the mooring. The recently refitted and extended kitchen/breakfast room now has a contemporary finish combining high gloss units with Corian worktops and an abundance of built in appliances.

The ground floor continues with a utility room, shower room, two double bedrooms and one en-suite bathroom. The first floor is arranged as one spacious master suite with a generous master bedroom leading out onto a balcony offering river views, a large five piece en-suite bathroom, two walk in wardrobe/dressing rooms and a galleried study area looking over the living room.

The boathouse was built in 2007 and provides a secure undercover mooring for one boat and further ancillary accommodation, currently arranged as a 22ft long living room with kitchenette, double bedroom with covered balcony and en-suite shower room.

The landscaped gardens are laid mainly to lawn with a selection of decked and paved seating areas and a variety of mature trees, shrubs and flowering borders. There is ample parking for a number of cars/boats/caravans etc with a detached garage and a 32ft side on mooring.

Additional features include sealed unit double glazing, oil fired central heating, electric underfloor heating to the kitchen, master en-suite bathroom and the rear porch and a heat recovery system.

A high quality property in a tranquil location, early viewing recommended.







ACCOMMODATION

Spacious Reception Hall: 14'9" (11'7" min) x 13'9"

Leaded and glazed front door with two glazed side panels, wooden flooring, moulded cornices, staircase to first floor, two built in cupboards, two radiators, double doors to the kitchen and into the:

Living Room: 24'5" x 14'10"

Light and airy, triple aspect room with high vaulted ceilings. French doors out onto decking with views out over the water and the River Bure beyond. Feature stone fireplace, TV point, wall lights and two radiators. Double doors to:

Sun Room: 12'0" x 9'6"

Triple aspect sitting room with large roof lantern, radiator, additional electric heater, spot lights and French doors leading out onto the waterside patio.

Kitchen/Breakfast Room: 16'5" x 14'10"

Recently extended and fully refitted with a full range of wall and floor mounted units with a contemporary gloss finish, with Corian worktops and under unit lighting.

The central island unit contains a sink unit and drainer, built in appliances include an electric oven, hob and extractor fan, microwave, dishwasher and a large fridge/freezer. Down lighters and pendant lighting. Wooden flooring, moulded cornices, under floor heating, box bay window with French doors leading out onto the waterside decking.

Utility Room: 10'2" x 7'8" (6'6" min)

Range of fitted units, sink, tiled splash backs, oil fired central heating boiler, built in airing cupboard. Down lighters, under unit lighting, part granite worktop, moulded cornice, door to:

Rear Porch

Under floor heating, door to rear.

Bedroom 2: 14'10" (12'10" min) x 9'9"

Dual aspect, fitted 3 door wardrobe and dressing table, radiator, moulded cornice.



En-Suite Bathroom

Low level w/c, vanity wash basin, panelled bath with fitted shower and screen. Moulded cornice, extractor fan, radiator, down lighters, partially tiled walls, window to side.

Bedroom 3: 14'9" x 8'8"

Window to front aspect with views over the water. Radiator, moulded cornice.

Shower Room

Low level w/c, vanity wash basin, shower enclosure, heated towel rail, partially tiled walls, extractor fan, coved ceiling.

FIRST FLOOR

Master Bedroom Suite

Galleried Landing/Study Area: 10'3" x 8'10"

Fitted desk and storage, window seat and access to eaves, radiator, coved ceiling, double doors to:

Master Bedroom: 15'0" x 14'10"

French doors leading out onto a balcony overlooking the water and the river beyond. Fitted range of furniture with double wardrobe, bedside cabinets, dressing table and chest of drawers. Ceiling fan, walk in wardrobe with radiator.

En-Suite Bathroom: 13'3" x 8'10"

Large circular jacuzzi bath, twin wash basins, double shower enclosure, low level w/c. Under floor heating, heated towel rail, down lighters, partially tiled walls, extractor fan, large **walk in wardrobe: 13'3" x 8'10"**: fitted hanging space.







BOATHOUSE

An impressive wet boathouse with power, light and water connected with mooring dock measuring 23'6" x 11'4"

The spacious and versatile accommodation is currently arranged as

Living Room: 22'10" (17'10" min) x 15'0"

Laminate wooden floor, night storage heater, staircase to first floor. Kitchen area with range of wall and floor mounted units, sink unit and drainer. Electric cooker point, extractor hood, window to rear.

FIRST FLOOR

Bedroom: 12'5" x 12'5" (23' max)

Built in double wardrobe, wall mounted electric heater, French doors out onto a covered balcony looking out over the water.

En-Suite Shower Room

Low level w/c, vanity wash basin, shower enclosure, heated towel rail, tiled floor, extractor fan, partially tiled walls. The boathouse also benefits from its own parking area.

Offering incredible flexibility, this accommodation could be used in a number of ways: home office, gym, hobby room, cinema room, artist's studio to name but a few. Use as an annexe or as a holiday let would be subject to planning permission.





OUTSIDE

The property is approached via a private roadway with a remote controlled gate giving access to the brick weave driveway, which in turn leads to the detached **Timber Garage: 19'2" x 16'1"** with power, light and a remote controlled roller door.

The landscaped garden is mainly laid to lawn with a variety of mature trees, shrubs and flowering borders ,and the house is well served for external lighting, power points and taps.

Raised composite decking with glass screening runs along one elevation, looking out over the water and beyond to the River Bure. There are additional paved seating areas and a circular deck with pergola with approximately 150ft of private quay headed frontage directly onto a private dyke, set only a matter of a few metres away from the River Bure, with access to the entire Broads network. To complement the boathouse there is an additional side on mooring measuring approximately 32ft long with space for a further dinghy or small day boat.

ADDITIONAL INFORMATION

Tenure: Freehold

Services: Oil fired central heating, bore hole water, septic tank drainage.

Whilst it is our intention that these sales particulars offer a fair and accurate account, they are provided for guidance purposes only and do not constitute part of any offer or contract.

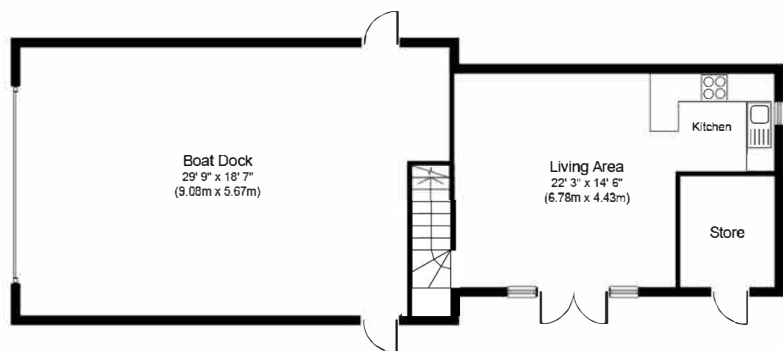
All measurements are approximate and we have not tested any equipment or services, and no warranty is given or implied that these are in working order.

Prospective purchasers are advised to satisfy themselves by inspection or by further investigation via their solicitor or surveyor.

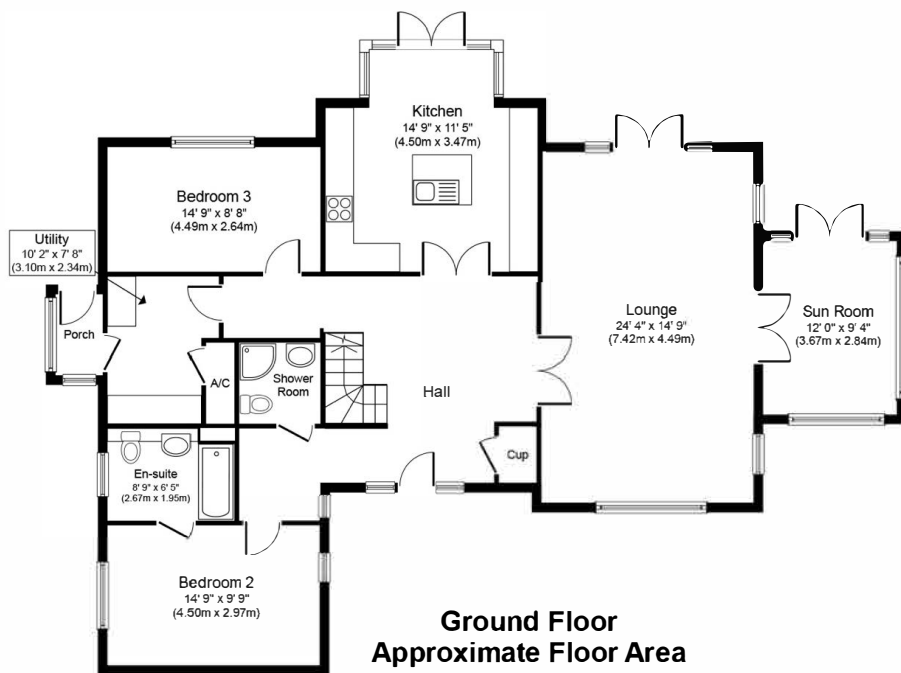
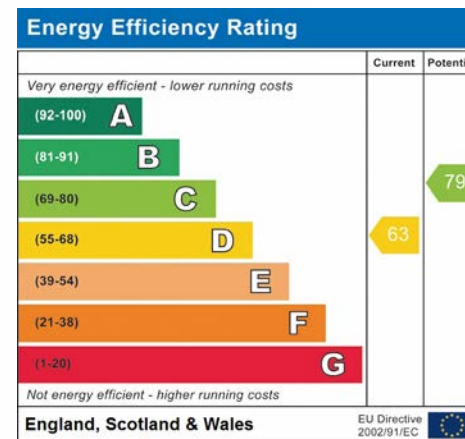
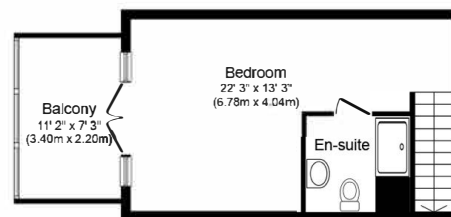




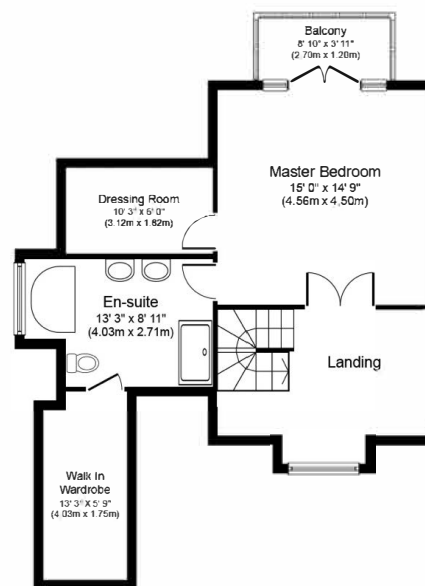




Boat House and ancillary accommodation



Ground Floor
Approximate Floor Area
1,466 sq. ft.
(136.2 sq. m.)



First Floor
Approximate Floor Area
619 sq. ft.
(57.5 sq. m.)



PLAN NOT TO SCALE
FOR GUIDANCE PURPOSES ONLY



WATERSIDE ESTATE AGENTS
Broads Haven, Potter Heigham, Norfolk NR29 5JD

Tel: 01692 670400
Email: sales@watersideestateagents.com
www.watersideestateagents.com